



Swami Atmanand Govt. English Medium Model College

Ambikapur, Distt. Surguja (C.G.) 497001

Website: scienceclgambikapur.com

Email: scienceclgambikapur@gmail.com

Feedback Analysis and action taken report for session 2023-24

The feedback received from various stake holders was reviewed and analyzed by the IQAC based on the feedback and discussion it was decided to take necessary action on the following:-

1. New building consisting of 6 rooms, one hall and toilets has been completed and available for use.
2. Leveling of 2 acres of the college ground for athletics and other games has been done.
3. Application for PG program for more subjects submitted to Higher Education, State Government.
4. 98 dual desks have been purchased for seating arrangements for students.
5. Library automation processed.

Principal
Swami Atmanand Govt. English
Medium Model College
Ambikapur, Distt. Surguja (C.G.)



Swami Atmanand Govt. English Medium Model College

Ambikapur, Distt. Surguja (C.G.) 497001

Website: scienceclgambikapur.com

Email: scienceclgambikapur@gmail.com

FEEDBACK FROM STUDENT REPORT ALL 2023-24

S.No	Questions	Votes in % (No. of Votes)			
		Very Good	Good	Satisfactory	Less Satisfactory
1	The admission process followed is fair and effective ?	87.50%	0.00%	8.93%	3.57%
2	How much of the Syllabus was covered in the class ?	66.07%	28.57%	1.79%	3.57%
3	Was the Course easy or difficult to understand ?	55.36%	44.64%	0.00%	0.00%
4	Internal assessment was ?	91.07%	7.14%	0.00%	1.79%
5	The academic atmosphere in the college is ?	64.29%	26.79%	7.14%	1.79%
6	Discipline in the college campus is ?	60.71%	25.00%	12.50%	1.79%
7	The library facilities are adequate and utilized optimally by the students and faculty ?	71.43%	12.50%	3.57%	12.50%
8	To what extent were you able to get material for the prescribed readings ?	67.86%	25.00%	5.36%	1.79%
9	The teachers come prepared for the classes ?	87.50%	12.50%	0.00%	0.00%
10	You are satisfied with course curriculum, examination and evaluation of the college ?	87.50%	0.00%	3.57%	8.93%
11	How well are the teachers able to communicate ?	85.71%	10.71%	0.00%	3.57%
12	The teacher encourages student participation in the class ?	80.36%	14.29%	0.00%	5.36%
13	Facility of Internet in the college campus ?	73.21%	10.71%	3.57%	12.50%
14	Diverse teaching learning methods like group discussion, seminar and assignment etc. are followed to achieve learning outcomes ?	82.14%	1.79%	0.00%	16.07%
15	Field visits, invited lectures, industrial visits if applicable cover the syllabus ?	76.79%	7.14%	0.00%	16.07%
16	Opportunities/programs for personality development conducted ?	85.71%	5.36%	1.79%	7.14%
17	College promotes environmental consciousness through tree plantations, cleanliness, energy and water conservation etc ?	83.93%	7.14%	1.79%	7.14%
18	The classrooms with smart board, furniture and electrification available are adequate ?	89.29%	3.57%	5.36%	1.79%
19	Cleanliness in college campus ?	91.07%	1.79%	3.57%	3.57%
20	Sports facilities, common room, drinking water facilities are available adequately ?	75.00%	7.14%	0.00%	17.86%


Principal
Swami Atmanand Govt. English
Medium Model College
Ambikapur, Distt. Surguja (C.G.)



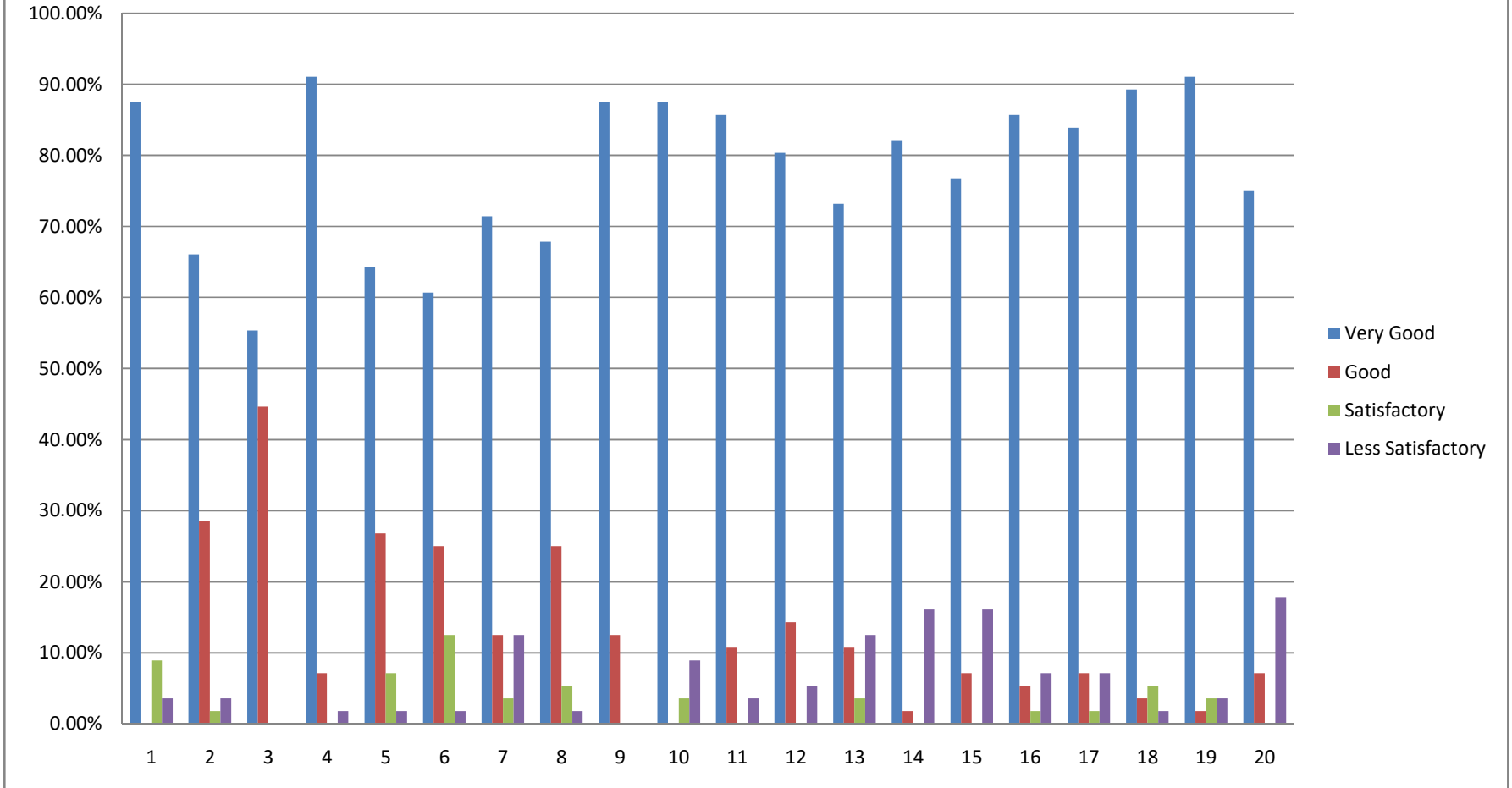
Swami Atmanand Govt. English Medium Model College

Ambikapur, Distt. Surguja (C.G.) 497001

Website: scienceclgambikapur.com

Email: scienceclgambikapur@gmail.com

FEEDBACK FROM STUDENT REPORT 2023-24



Principal
Swami Atmanand Govt. English
Medium Model College



Swami Atmanand Govt. English Medium Model College

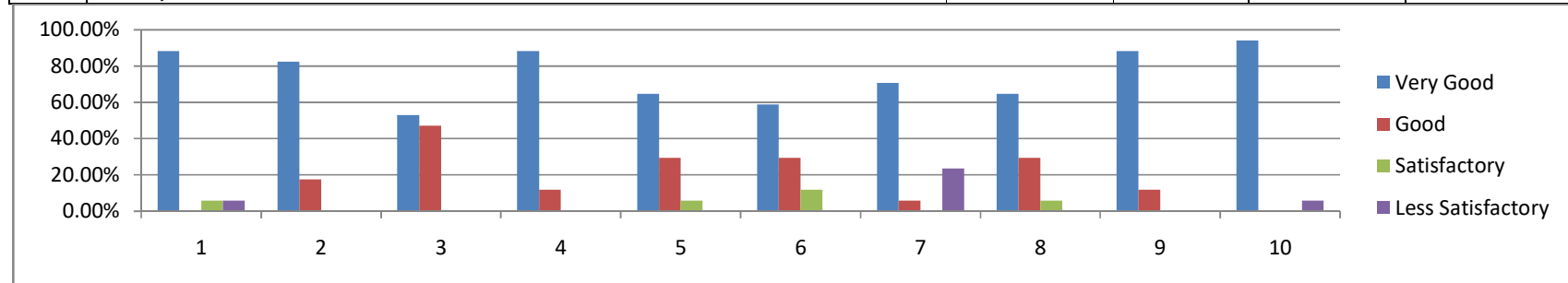
Ambikapur, Distt. Surguja (C.G.) 497001

Website: scienceclgambikapur.com

Email: scienceclgambikapur@gmail.com

FEEDBACK FROM TEACHERS REPORT 2023-24

S.No	Votes in % (No. of Votes)	Very Good	Good	Satisfactory	Less Satisfactory
1	The IQAC is working well for promoting quality in the institution ?	88.24%	0.00%	5.88%	5.88%
2	College administration grants leave to the teachers for attending the faculty enrichment programs ?	82.35%	17.65%	0.00%	0.00%
3	Adequate learning resources are available in the college ?	52.94%	47.06%	0.00%	0.00%
4	College management encourages to organize seminars/workshops/conferences /consultancy ?	88.24%	11.76%	0.00%	0.00%
5	Is the Faculty motivated for patents and funded Projects ?	64.71%	29.41%	5.88%	0.00%
6	The teaching aids and other facilities in the department are sufficient and up to date ?	58.82%	29.41%	11.76%	0.00%
7	College administration is sincere for the development of the institution and quality education ?	70.59%	5.88%	0.00%	23.53%
8	College promotes environmental consciousness through tree plantations, cleanliness, energy and water conservation etc ?	64.71%	29.41%	5.88%	0.00%
9	Diverse learning method like group discussion, seminar and assignment etc. are followed ?	88.24%	11.76%	0.00%	0.00%
10	The library facilities are adequate and utilized optimally by the students and faculty ?	94.12%	0.00%	0.00%	5.88%




Principal
 Swami Atmanand Govt. English
 Medium Model College
 Ambikapur, Distt. Surguja (C.G.)




Swami Atmanand Govt. English Medium Model College

Ambikapur, Distt. Surguja (C.G.) 497001

Website: scienceclgambikapur.com

Email: scienceclgambikapur@gmail.com

FEEDBACK FROM ALUMNI REPORT 2023-24					
S.N	Votes in % (No. of Votes)	Strongly Agree	Agree	Netural	Disagree
1	Adequate classrooms with smart board, furniture and electrification is available?	100.00%	0.00%	0.00%	0.00%
2	The teachers encouraged student participation in the class rooms?	77.78%	22.22%	0.00%	0.00%
3	You are satisfied with course curriculum, examination and evaluation of the college?	0.00%	0.00%	0.00%	0.00%
4	Opportunities/programs for personality development were conducted in the college?	100.00%	0.00%	0.00%	0.00%
5	College promotes environmental consciousness through activities like tree plantations, cleanliness, energy and water conservation etc?	0.00%	0.00%	0.00%	0.00%
6	There is considerable development in the college in recent years?	94.44%	5.56%	0.00%	0.00%
7	The college is involving alumni in its activates?	94.44%	5.56%	0.00%	0.00%
8	The alumni help in academically strengthening the college?	94.44%	5.56%	0.00%	0.00%
9	The college administration should take more effort to efficiently enroll and strengthen the alumni association?	94.44%	5.56%	0.00%	0.00%
10	I feel proud to be an alumni of this college?	88.89%	5.56%	5.56%	0.00%

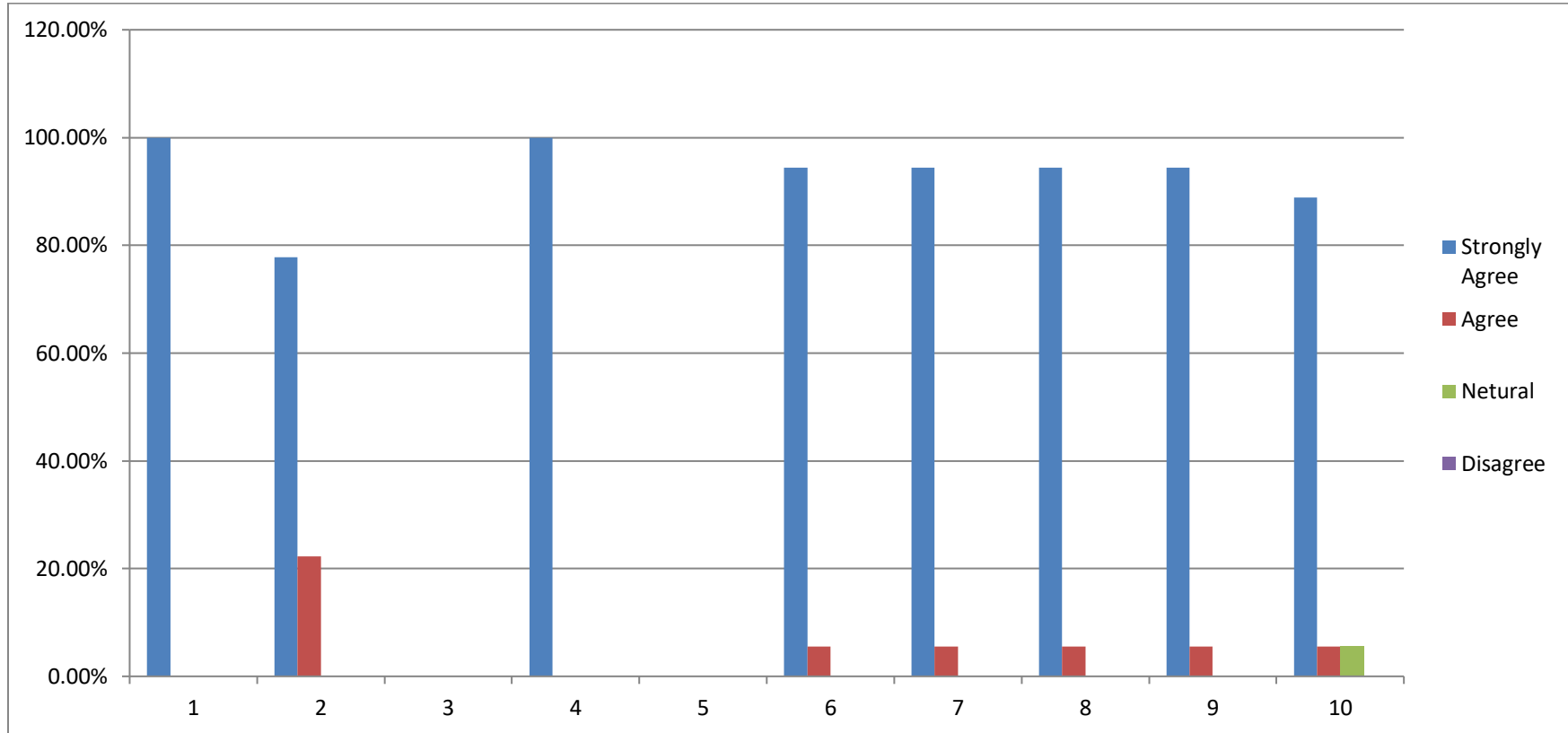

Principal
Swami Atmanand Govt. English
Medium Model College
Ambikapur, Distt. Surguja (C.G.)



Swami Atmanand Govt. English Medium Model College

Ambikapur, Distt. Surguja (C.G.) 497001

Website: scienceclgabikapur.com
Email: scienceclgambikapur@gmail.com



Feedback from Alumni Report 2023-24


Principal
Swami Atmanand Govt. English
Medium Model College
Ambikapur, Distt. Surguja (C.G.)